

TESTI GROUP: THE MASTERS OF NATURAL STONE

Testi Group is a professional well known producer of custom special projects.

The group consists of 7 companies with the most modern technology and a complete production cycle offering more than 320 different types of marbles, granites, onix and travertines.

Founded in 1910, Testi Fratelli is the jewel in the crown and reference point for high end quality products for villas, yachts, luxury living spaces and gardens. The production covers pavings walls, stairs, bathrooms, halls, conference rooms, monuments, fountains, columns, florentine mosaics, statues, fireplaces, decorations, interior claddings.

Thanks to the enormous experience accumulated through the years and the close cooperation with most famous architects such as:

Mario Botta, Hans Hollein, Norman Forster, Aldo Rossi, Christian Pongratz, Helmut Vorreiter, Ludwig Pederiva, Alexey Morozov, Testi signs most prestigious projects.

After years of study of Testi Research Department in new textures Testi Fratelli presents HYPERWAVE, the new series of 3D surfaces in marble and stone.

Hyperwave is the result of latest 3D design and stone manufacturing technologies and represents a unique customisable line for interior and exterior wall claddings and floors. The design takes inspiration in natural forms which introduce an architecture of experience with smooth tactile stone surfaces. The spatial experience is enriched not only with a combination of exceptional forms and materials, but through the transmittance of sensations closely connected to aesthetic motifs with emotional spatial qualities.

TESTI FRATELLI srl VIA DELL' INDUSTRIA, 46
37015 S. AMBROGIO DI VALPOLICELLA (VERONA) ITALY
TEL +39.045.6833333 - FAX +39.045.7731089
testi@testigroup.com www.testigroup.com www.hyperwave.it

OCEAN TO A GARDEN

Presented by SIMPLY ITALIAN

SIMPLY ITALIAN SIMPLY ITALIAN works in the contract market acting as One-Stop-Shop for architects, specifiers and developers, to provide high end Italian interior design products and services in the UK and worldwide. In choosing to work with Paul Cooper, we have extended the boundaries for our work to include exterior design. This clearly falls in line with Paul's way of designing, where the boundaries between interior and exterior design may be fluid or ambiguous, with both areas feeding on each other for inspiration and contrast, sometimes with surprising results and often forcing you to reconsider your perspective. Paul's work as a sculptor and designer is often based around such ideas, often more accurately defined as Installations or Fine Art.

This blurring of the boundaries is by no means new. Dating back probably to the middle of the 16th Century in Padua, gardens included grand orangeries in large estates with flamboyant columns, stucco ceilings, grand urns and sculptures, all designed to raise plants in style under cover. Follies and grottoes from previous centuries relied entirely on their exterior role - there was no interior.

Working with Paul as our designer, we have relied on the expertise and know-how of The Best in the industry. That was our reason for working with one of the largest Italian stone producers TESTI FRATELLI. They were able to give us not only the widest possible choice in stone, but also the finest and latest manufacturing techniques. With the theme of water and the oceans brought into a garden, we were able to design a space where the undulating marble panels normally labelled 'hard landscaping' became 'soft landscaping'.

For our water and lighting installations, we were able to extend the boundaries of what can be achieved with water as a flowing medium with the advice and assistance of H2O, the leading experts in this field in the UK. For our watery landscape we also needed the assistance of H2O as leading experts in exterior lighting, both above and below water, to add drama to the design after sunset.

SPONSORED BY:

H2O Group H2O Group has been providing irrigation and lighting services for over 20 years, with a philosophy of using environmentally sustainable resources. The irrigation systems always use re-cycled water where possible and the lighting systems provide LED solutions and solar alternatives. Our customer base ranges from commercial blue chip companies to small residential dwellings resulting in the Group being the largest residential irrigation supplier in the UK.

We are proud to be involved in TESTI FRATELLI's garden, as it highlights the issues close to our business philosophy. We consider this design to be very important in driving the gardens at Chelsea to another level. This has allowed us to design a state of the art water system using 100% recycled water and an LED solution to the lighting system, highlighting the two main elements of the garden: Water and Light.

BISOL BISOL have been producing fine proseccos from the steep and beautiful hills of the Valdobbiadene region of the historical Tre Venezie region since 1542. As wine makers to the early Venetian noble families, Bisol wines have a long and strong relationship with Venice. The award winning wines, which are internationally recognised for their excellence, quality and innovation, complement this elegant Italian garden.
www.bisol.it imported into the UK by Bibendum Wine www.bibendum-wine.co.uk

SIMPLY ITALIAN, 6 EGGARS HILL, ALDERSHOT, HANTS, GU11 3NW
Tel+44 (0) 1252 326 416. Fax +44 (0) 1252 334490. Website: www.simply-italian.co.uk

TESTI

FRATELLI

OCEAN TO A GARDEN

PRESENTED BY SIMPLY ITALIAN

CHELSEY FLOWER SHOW

2 0 0 8

DESIGNED BY PAUL COOPER

PAUL COOPER BIOGRAPHY

Paul Cooper has been working as garden designer/artist since 1984. His style is often radical and unconventional, resulting in gardens which can be defined as art of gardening rather than craft of gardening. Paul's garden designs are regularly featured in periodicals, newspapers, radio and TV. He has lectured extensively, authored books and exhibited in the UK and internationally, winning numerous bursaries and major awards.

1972 Graduated from University of Newcastle-upon-Tyne in Fine Art

ACADEMIC POSITIONS:

1972-74 Teaching Fellow, Dept of Fine Art, Newcastle-upon-Tyne

1974-88 Lecturer, Dept of Art and Environment, University of Lancaster.

1980-84 University Assessor and Advisor to Charlotte Mason College of Education, Cumbria

1971 and 1981 Visiting Professor/Artist at Oklahoma State University and Maryland Institute of Art

VISITING PROFESSORSHIP:

1979 Oklahoma State University, USA

1981 Maryland Institute of Art, USA

GARDEN EXHIBITIONS:

1991 'Just what is it?' Hampton Court International Flower Show (Silver Medal)

1991 'The Hanging Gardens' for Chelsea Flower Show (Silver Medal)

1992 'The Greening of Industry' for Chelsea Flower Show (Gold Medal/Sword of Excellence for Best Garden)

1993 'Kinetic Garden' for Hampton Court Flower Show (Silver Medal)

1993 'Guess who's coming to dinner' at BBC Gardeners World NEC (Waterford Crystal Award) 1993 'Touch of Midas' for Chelsea Flower Show (Silver Medal)

1994 'Rhapsody in Green' for Chelsea Flower Show

1994 'Cool and Sexy' for Chelsea Flower Show

1997 'Boys Own Garden' for Ford Motor Company at Chelsea Flower Show

1999 'Floating Garden' for Chelsea Flower Show

2002 International Garden Festival in Grand Metis, Quebec, Canada, representing UK

2003 'Climate Cases' for Chelsea Flower Show

AUTHOR OF:

2001 *The New Tech Garden*, Mitchell Beazley

2001 *Living Sculptures*, Mitchell Beazley

2003 *Interiorscapes*, Mitchell Beazley

2003 *Gardens without Boundaries*, Mitchell Beazley

Mentioned in *The Garden Book* by Phaidon Press, *Radical Garden* by Thames & Hudson, *Jardins d'aujourd'hui* by Fonds Mercator, and *Avant Gardeners* by Thames & Hudson

www.paulcooperdesign.co.uk

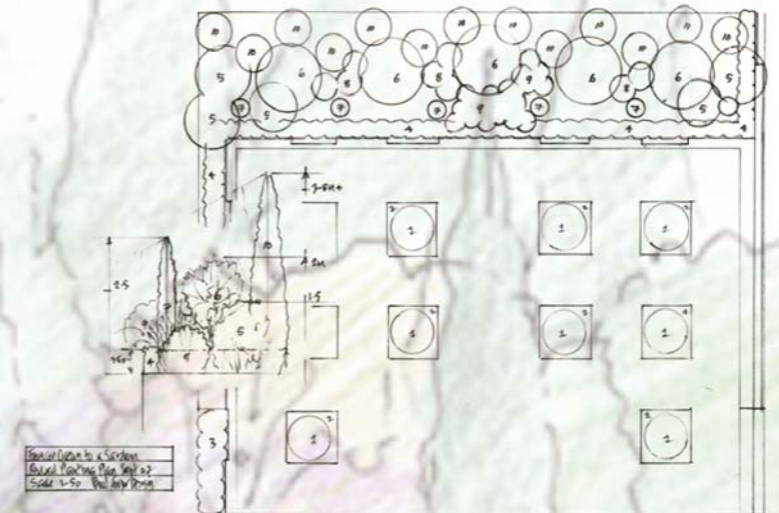
OCEAN TO A GARDEN – A GEOLOGICAL ODYSSEY

The garden represents an exploration of the relationship between a lost ocean and the evolution of the Italian landscape. The geological history of the country has been a violent one. Over the centuries, ocean floor r plate tectonic activity and volcanic eruptions have both conjured new land into existence and flooded inhabited landscapes.

The geological processes have forced rock heavenwards out of the sea to form mountains which in turn have provided man with a vital supply of minerals and building materials. Elsewhere they have created the rich soils now colonized by vegetation.

In Renaissance Italy, the stone was used to create great architecture and gardens. The architectural style of 'Ocean to a Garden' refers to the 16th century Veneto Villas designed by Palladio and the planting to both the native and man-made landscape of this region. The garden also makes reference to nearby Venice and the efforts of 'man' to create a city in the sea.

It is a garden of two levels – a lower zone given over to water and an upper zone dominated by planting. The architecture of the garden functions in three ways: Firstly it represents the final part of the journey of the stone - its adoption by man. Secondly, it provides a historical context. Thirdly it defines the garden's two distinct zones: It contains the 'ocean zone' and provides the supporting structure for the upper garden.



PLANT SCHEDULE

ref: planting plan

- 1 Shrub Rose – Colour: Cerise
- 2 Dwarf Lavandula
- 3 Sea-Weed
- 4 Buxus sempervirens
- 5 Myrtus communis
- 6 Olive
- 7 Juniperus virginiana 'Skyrocket'
- 8 Miscanthus sinensis 'Morning Light'
- 9 Euphorbia characias wulfenii
- 10 Cupressus sempervirens 'Pyramidalis'